



TECHNOMIX GROUP | MEMBER OF THE TIC GROUP

Shaping the future through integrated solutions for testing, inspection, and technology.

Systems provider for testing and automation solutions

Quality inspections using non-destructive testing (NDT), test automation, custom machine building, and quality-assuring contract work as an extended workbench.

“We help companies to reliably ensure quality.”

www.technomix.eu

Preface.

Dear Sir or Madam,

Anyone involved in manufacturing today knows about the pressure: quality requirements are rising, components are becoming more complex, supply chains are tightening - and the margin for error is shrinking, while cost pressure is growing. At the same time, regulatory requirements are becoming stricter, OEM demands are growing more demanding, and the demand for reliable, technologically advanced quality solutions from a single source is noticeably increasing. For manufacturing companies, this means that quality assurance is no longer a marginal issue - it is a strategic success factor that determines delivery capability, reputation, and competitiveness.

It is precisely in this environment that we have consistently further developed Technomix in recent years - not out of reaction, but out of conviction. What began in 1987 as a specialized quality service provider has become a technologically diverse partner for industrial quality assurance: with our own fleet of automated machines, nondestructive testing methods, expertise in custom machine building, and a full-service offering that goes far beyond traditional testing. We have invested in technology, in people, and in processes, because we are convinced that our customers deserve more than a traditional testing service provider. They deserve a partner who thinks proactively, looks ahead, and develops solutions that truly meet their requirements.

Our commitment has always remained the same: reliable test results, clear processes, and a partnership you can count on - even on short

notice, even for complex requirements, and even when time is of the essence.

With over 250 qualified employees at our locations in Germany and the Czech Republic, we test approximately 200 million components annually - in a structured and certified manner. Despite all our advancements, we have remained true to what has always set Technomix apart: a family-run company that takes responsibility - for its customers, for its employees, and for the products entrusted to us every day.

For us, industrial quality control means more than just inspecting individual components. It creates security in supply chains, protects reputations, and strengthens the trust that customers, partners, and end-users place in a product.

This brochure provides an insight into the Technomix Group: our origins, our services, our technologies, and our commitment to developing the right solution for every inspection task. We look forward to supporting you in meeting your quality requirements.



Thomas Kraus

Technical Director & Board Member



Dominik Breuer

Board Member

Table of Contents.

01 Company profile	P.05
02 Our locations	P.06
03 Service portfolio	P.10
03.1 Contract audit	P.11
03.2 Quality inspections	P.12
03.3 Non-Destructive Testing (NDT)	P.13
03.4 Fully automated camera inspection	P.15
03.5 Custom machine building	P.17
03.6 Full service & logistics	P.18
03.7 On-site management	P.19
04 The typical inspection process	P.21
05 Why Technomix?	P.23
06 Contact & locations	P.24



COMPANY PROFILE

Ensuring quality.

The components we inspect every day are used in applications where errors are not an option - in power units, aircraft structures, electronic assemblies, and safety-critical systems. This gives our work significance - and drives us to make no compromises whatsoever.

For over 50 years, the Technomix Group has stood for precise, reliable, and technologically sophisticated quality assurance. With more than 5 locations in Germany and the Czech Republic, over 250 qualified employees, and an annual testing volume of around 200 million components, we support industrial companies in securing their production and supply processes - in a structured, standards-compliant manner and with clearly defined procedures.

As a technology and solutions partner, we are therefore able to meet virtually any requirement - whether it involves standardised series testing, customised solutions, or complex technical challenges.

Our approach deliberately goes beyond what traditional quality assurance typically provides: We think in terms of processes, not individual testing steps - and work with our customers to develop solutions that integrate seamlessly into existing workflows. This brings together experienced employees, state-of-the-art testing technology, and a well-established network of alliance, technology, and industry partners - always with the goal of striking the right balance between precision, cost-effectiveness, and speed. This results in testing concepts that not only work but also stand the test of time in day-to-day operations.

Our customers thus receive far more than just individual testing services - they gain an experienced partner who understands requirements, structures processes, and delivers reliable test results.

30+

Years of experience in quality assurance

250+

qualified employees

200 Mio+

components per year

5+

Locations in Germany and the Czech Republic

NATIONALLY ESTABLISHED. INTERNATIONALLY PRESENT.

Locations, market presence & network.



COMPANY PROFILE

Building trust.

Supplemented by full-service offerings in assembly, rework, packaging, and logistics, we can also handle complete process chains between your plant and delivery upon request.

This makes quality assurance an integral part of efficient industrial processes - and Technomix a reliable link to your end customer.

But technology and processes alone do not make a good partner. As a family-run company, we place particular value on reliability, transparency, and collaborative partnership. We have been supporting many of our customers for years, some for decades. We do not take this trust for granted - it is both a standard and an incentive for us.

 SCHERDEL

stoba
Precision
Technology

KLUMPP

 Parker

KRON
SOLINGEN

Hutzel-Seidewitztal 
Präzisionsdrehteile

SFS

 Hirschvogel
Automotive Group

 **BÜSCHEL**
FEINSCHEIDTECHNIK | WERKZEUGBAU

 LEIFER

 **MTU**
Aero Engines

PRAWEST

DIEHL
Metall

 **BOSCH**

SCHAEFFLER

INDUSTRIES

Industries with the highest demands.

Our testing services are in demand wherever safety-critical components are manufactured and precise test results are indispensable. Over the years, we have developed a deep understanding of the respective technical, regulatory, and procedural requirements across various industries - and have consistently tailored our services to meet them.

Every industry brings its own challenges: different standards, different tolerances, different documentation requirements, different paces.

We know what matters in each situation - and tailor our testing methods, processes, and reporting accordingly. Our clients benefit not only from our many years of experience but also from a network of alliance, technology, and industry partners, whom we specifically engage when specialised expertise or unique procedures are required.

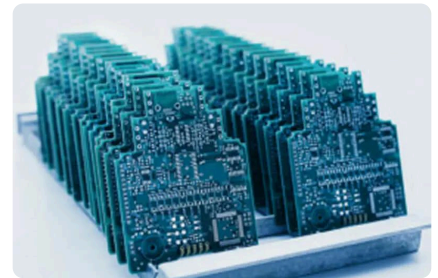
This results in testing concepts that not only meet requirements but also create real added value for our customers' value chain.



Automotive



Aerospace



Electronics



Energy & Industrial Applications



Medical Technology



Rail Vehicles & Transportation
Technology

CERTIFICATIONS

Verifiable standards.

Trust in industrial quality assurance is not built on words, but on verifiable standards. Our certifications reflect a structured quality management system - and serve as your assurance that we meet even the most stringent regulatory requirements.

They encompass the key areas of quality, environment, aerospace, information security, and the defense sector - thus covering a broad spectrum of safety-critical industries.

Our own certifications:



Quality Management System

International standard for structured processes, continuous improvement, and reliable quality assurance.



Quality Management System for Aerospace

Extension of ISO 9001 to include aerospace-specific requirements – A prerequisite for collaboration with OEMs in the industry.



Environmental Management System

Demonstration of responsible use of resources and environmental stewardship throughout all operational processes.

Available through our association:



Information Security Management Systems (ISMS)

Structured protection of confidential information and data – relevant for sensitive industries such as defense, medical technology, and energy.



Quality Assurance in the Defense Sector

Specific NATO requirements for suppliers and service providers in the military and security sectors.

SERVICE PORTFOLIO

Everything from a single source.

Industrial quality assurance requires more than just individual testing services - it demands an understanding of processes, industries, and interfaces. That is exactly what we bring together under one roof.

From traditional sorting to fully automated inline inspection, from non-destructive material testing to custom machine building - our portfolio is

broad and is continuously being further developed. Whether it's short-notice complaint handling, a safe-launch phase, re-inspection of pseudo-rejects, 100% inspection of safety-critical components, or the strategic outsourcing of your quality assurance - our services can be utilized individually or in combination, tailored precisely to your requirements.



Contract audit

Traditional inspection services as an extension of your quality assurance team.



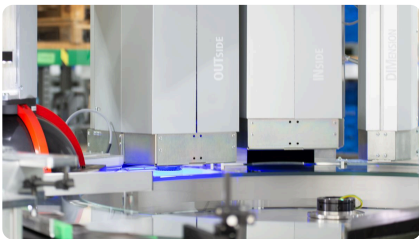
Quality inspections

Specific inspection methods ranging from surface to microstructure.



Non-destructive testing

Certified NDT methods for internal and external component characteristics.



Fully automated camera inspection

Scalable 100% inspection using shape-from-shading technology.



Custom machine building

Custom inspection machines tailored to your specific requirements.



Full service & logistics

Assembly, finishing, packaging - the final step before the end customer.



Onsite management

Qualified inspection personnel directly at your site.



On the following pages, we present the key components of our service portfolio in detail.

CONTRACT AUDIT

Your extended workbench.

When complaints are looming, capacity is lacking, or series production runs need to be secured, reliable testing services are crucial. As an extension of your production line, we integrate seamlessly into your production and supply chains and handle the testing, sorting, and evaluation of your components - in a structured, documented, and audit-ready manner. This ensures that only approved parts enter your subsequent processes, production interruptions are avoided, and your delivery capability remains secure.



Contract audit

Comprehensive quality inspection of your components according to defined criteria and defect catalogs.



Contract sorting

Reliable separation of good, defective, and rework parts - quickly and precisely.



Contract measurement

Precise dimensional inspection to ensure tolerance-critical features.



Sorting & rework

Identification of defective components and - where possible - direct rework for reuse.



Incoming & outgoing goods inspection

Quality assurance at the key points in your supply chain.



Contract assembly & contract packaging

Defined assembly, packaging, and picking services as part of your quality assurance.

QUALITY INSPECTIONS

Precise testing. Clear evaluation.

Industrial quality is achieved through precise testing - using the right method for each specific requirement. From surface inspection to microstructural analysis, we cover the entire spectrum of common quality tests - manually, semi-automatically, or fully automatically, always based on clearly defined test criteria and standard specifications.



Surface inspection

Detection of scratches, pores, burrs, and coating defects.



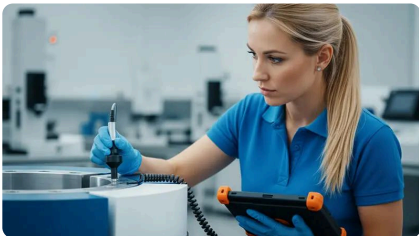
Crack testing

Detection of surface and volumetric cracks to ensure the safety of critical components.



Weld inspection

Evaluation of welded joints for fusion defects, porosity, and cracking.



Coating Thickness Measurement

Non-destructive measurement of anti-corrosion, electroplated, or paint coatings.



Pipe testing

Leak and pressure testing of pipes and components.



Dimensional inspection

Precise inspection of lengths, diameters, angles, and tolerances.



Hardness testing

Inspection of mechanical material properties and heat treatment.



Microstructural analysis

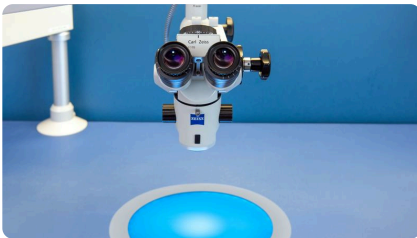
Analysis of the material structure to evaluate material condition and heat treatment.

NON-DESTRUCTIVE TESTING METHODS (NDT)

Ensuring component integrity.

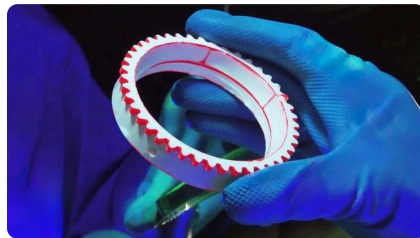
Non-destructive testing (NDT) enables the assessment of components and materials without damaging them - from pure surface inspection to the interior of the component. Depending on the material, geometry, and defect pattern, different methods are used, which we apply individually or in combination.

With certified inspection personnel in accordance with EN ISO 9712, standards-compliant documentation, and over 50 years of experience in industrial quality assurance, we create a solid basis for decision-making - for production, incoming goods, complaints, or supplier evaluation.



Visual Testing (VT)

Visual inspection of surfaces and geometries - manually or camera assisted - to detect external defects such as cracks, burrs, contaminants, or dimensional deviations.



Penetrant Testing (PT)

Crack testing on non-magnetic materials - capillary-active testing agents make even the finest surface cracks visible.



Magnetic Particle Testing (MT)

Crack testing of ferromagnetic materials - detection of surface and near-surface defects.



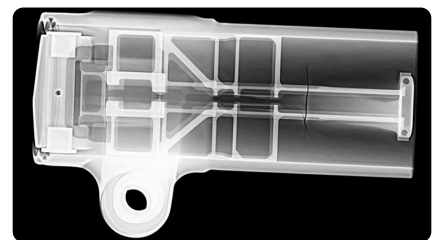
Ultrasonic testing (UT)

Volumetric inspection inside the component. Detection of internal defects, bonding defects, or inhomogeneities.



Eddy current testing (ET)

Inspection of edge zones and material condition - detection of cracks, and burn-through, as well as evaluation of hardness and microstructure.



X-ray inspection

Volumetric imaging inspection - visualization of internal structures and defects using radiation.

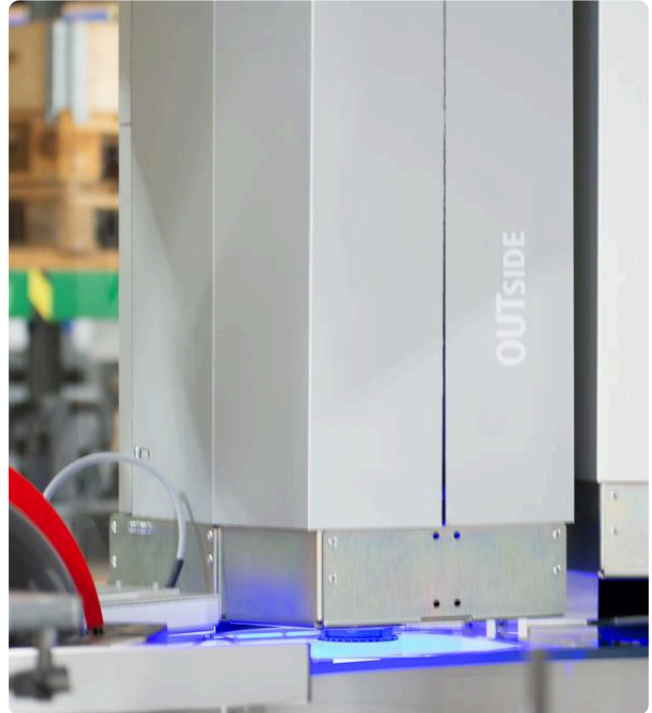


FULLY AUTOMATED CAMERA INSPECTION

Highest precision.

With our own fleet of automated machines, we offer fully automated 100% inspection of your components - fast, precise, and cost-effective. The systems are based on modern shape-from-shading technology and combine optical visual and dimensional inspection with integrated eddy current testing in a single inspection process. This allows you to benefit from fully automated quality assurance without having to invest in equipment, personnel, or maintenance structures yourself - with all the advantages of a scalable solution, even for smaller or time-limited projects.

State-of-the-art inspection technology as a service - flexibly available and cost-effective.



Our testing scope:



Type of components

Rotationally symmetric and cylindrical components - seals, precision parts, turned, stamped, and fastening elements



Performance data

Cycle times starting at 0.5 seconds per component, repeatability $\pm 1 \mu\text{m}$, fully automatic sorting



Materials

Rubber, metal, and plastic



Component dimensions

Diameter 5 to 82 mm, heights 1 to 40 mm



For detailed technical specifications and application examples, please refer to our separate machine brochure.



CUSTOM MACHINE BUILDING

Tailor-made.

Not every testing task can be solved with existing equipment. When components, cycle times, or quality requirements demand a customized solution, we develop tailor-made testing machines - precisely tailored to your products and processes.

For us, custom machine building doesn't start with mechanics, but with a deep understanding of components, failure patterns, and testing requirements. With over 30 years of experience in industrial series testing, we know what really matters technically - and translate this experience into cost-effective, reproducible testing systems.

Our role in the project:

In custom machine building, Technomix assumes overall technical responsibility - from feasibility assessment and the technical design of the test architecture to supporting validation and series production approval. Mechanical and electrical implementation is carried out in collaboration with qualified partner companies from our network, which has grown over decades - under our technical leadership and quality control.



Our integration models

Integration into your production:

The test system is integrated directly into your manufacturing process - either inline within the production flow or as a standalone test cell. You benefit from immediate test results and maximum process control.

Operation at the Technomix site:

The system is operated at one of our locations - exclusively for your company or through a cost-effective shared-use model. You receive high-precision 100% testing without any investment or commitment of your own personnel.

FULL SERVICE & LOGISTICS

Going the extra mile.

Quality assurance doesn't end with the inspection. Upon request, we handle all additional steps related to your components - from assembly, rework, and packaging to the complete logistics process between your plant, quality assurance, and the end customer. This creates a seamless quality assurance process without any interruptions - and Technomix can serve as the final quality assurance station before your end customer, if desired.



Assembly

Screwing, inserting, joining, adjusting, gluing, as well as pre-assembly and final assembly of subassemblies carried out according to your work instructions and approval processes.



Rework

Deburring, grinding, drilling, cleaning, painting - targeted processing of components to restore specifications, particularly for production runs or handling customer complaints.



Packaging

Packaging, blister, vacuum, and shrink wrapping, labeling, and marking, including white-label shipping on behalf of the client.



Logistics

Just-in-time pickup and delivery using our own fleet or partner carriers, regular milk run routes, adaptation to individual delivery schedules (e.g., WebEDI), covered goods delivery up to 40 tons for semitrailers, and complete customs clearance for international freight.

ONSITE MANAGEMENT

Right at your location.

Not every inspection can or should take place outside your facility. With our onsite management, we handle your quality assurance where it's needed - right in your production environment. Our qualified, validated inspection staff comes to you with the necessary equipment and takes on all quality assurance tasks that arise at your site - flexibly scalable, short- or long-term

and within the framework of a clearly defined service contract. Unlike with traditional staffing agencies, you do not receive individual workers, but a comprehensive inspection service with clearly defined responsibilities - without labor law issues or the need to build your own structures

When onsite management makes sense:

- When components are not allowed to leave the factory for regulatory or contractual reasons
- In time-critical situations such as an impending delivery stoppage or an urgent complaint
- For very large or difficult-to-transport components
- When sensitive products or manufacturing information must be treated confidentially
- When you wish to observe and oversee the inspection process directly on-site
- In the event of capacity bottlenecks in internal quality assurance during ongoing production

What you get from us:

- Qualified, validated inspection personnel with comprehensive training and regular validation checks
- Our own testing equipment, depending on requirements
- Complete organizational handling - from travel and accommodation to long-term scheduling
- A service model based on a contract for work with clearly defined scope and responsibilities
- Scalability from assignments lasting a few days to several years



THE TYPICAL PROCEDURE FOR AN INSPECTION

From the first to the last component.

No matter how diverse the components, requirements, and industries may be - our approach follows a clearly structured process. From incoming goods to outgoing goods, we ensure that every step is traceable, documented, and audit-ready. What sets us apart is not just the process itself, but the way we support you through every step of the way.

01

Incoming goods

Structured acceptance, identification, and quantity verification of your components - as the basis for all further testing activities.

02

Test preparation

Creation of test instructions and defect catalogs, and selection of the appropriate test method.

03

Testing

Manual, automated, or a combination - depending on requirements. Performed by qualified, validated inspection personnel using state-of-the-art technology.

04

Reporting

Defect collection cards, image documentation using high-resolution digital microscopes, and custom defect catalogs upon request.

05

Sorting & rework

Separation into good, defective, and rework parts, optionally supplemented by direct rework to enable reuse of components.

06

Goods issuance

Packaging according to your specifications, labeling, marking, and delivery to your logistics provider or directly to your end customer.

Throughout the entire inspection process:

- A dedicated contact person from goods receipt to goods issue - no changing contacts, no hand-offs
- Proactive updates on inspection progress, quantities inspected, and identified defects
- Immediate notification in case of unexpected anomalies or new defect patterns
- Detailed documentation in the form of defect summary sheets and customer-specific reports
- With an average PPM rate of 100-130 per employee, we are well below the statistical industry average of over 1,000



WHY CHOOSE TECHNOMIX?

Eight reasons to choose us

01

A true full-service provider for industrial quality assurance

Manual inspection, fully automated camera inspection, NDT, custom machine building, and full-service solutions - we cover everything related to quality assurance. And everything beyond that.

02

Over 30+ years of technological expertise

For over three decades, we have been developing inspection solutions for industrial applications - drawing on the wealth of experience that comes only from decades of serial testing, and the technological openness that is in demand today.

03

State-of-the-art testing technology without upfront investment

With our own fleet of machines - including systems featuring shape-from-shading technology - you benefit from fully automated quality assurance without having to make the investment yourself. Fast, precise, and cost-effective.

04

Certified and validated personnel

Our inspection staff undergoes a structured selection process, intensive training, and regular validation tests. This ensures that you receive consistently reliable results - day after day.

05

Short lead times and responsiveness

When speed is of the essence, we're here for you. We handle urgent testing requests on time and in an organized manner - whether it's a complaint, a bottleneck, or a special situation.

06

Flexibility

At our facility, at yours, or both: We deliver our testing services exactly where they're needed - exclusively for you or through an economically attractive shared-use model on our facilities.

07

Cost-effective location structure

With locations in Germany and the Czech Republic, we offer competitive cost models - without compromising on quality, response time, or reliability.

08

Strong partner network

Where our own capabilities end, our network begins. Through our alliances with technology and industry partners, we create solutions that go beyond our standard portfolio - and do exactly what you need.

GET IN TOUCH!

Contact us - easily and directly!

Every project starts with the right decision—with Technomix, you're choosing a partner that combines quality, reliability, and tailor-made solutions. We look forward to your inquiry!



Technomix Group

Gewerbegebiet Limbach 6
96178 Pommersfelden
Germany



+49 (0)9548 - 9828 0



info@technomix.de



www.technomix.eu



Our certifications:

DIN EN ISO **9001**
DIN EN ISO **14001**
EN **9100**

